

# BARRON A

\$917,780

07 FACADE

 4  2  2



## PARK RISE ESTATE

LOT 4 WINDSOR STREET  
WOODFORD

HOUSE AREA 187.81M2

LAND AREA 600M2

**TITLE RELEASE AUG 2026**

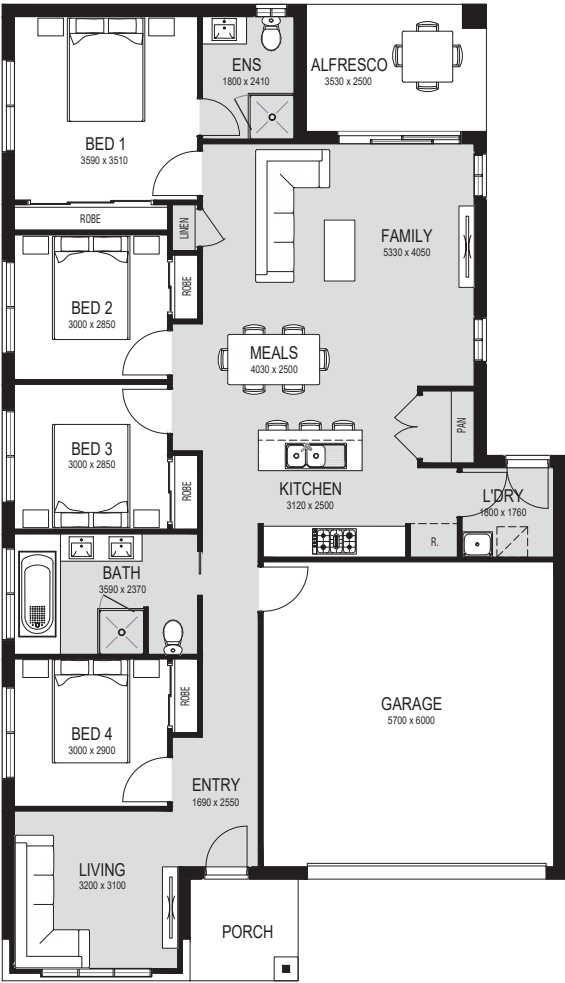
HOUSE PRICE \$442,780

LAND PRICE \$475,000

**TOTAL PRICE \$917,780**

### TURNKEY INCLUSIONS

-  Full turnkey package
-  Fixed price (including site costs)
-  900mm appliances throughout
-  Split cycle cooling system to family room and Bed 1
-  Ceiling fans to living room & all bedrooms
-  Venetians and Holland blinds to all windows
-  Quality carpet and laminate flooring throughout
-  Fully landscaped front & rear gardens, including coloured concrete driveway, path and rear outdoor living area, fences to sides and rear, clothesline & letterbox



\*Facade as shown may be altered to suit developer requirements—lighting, stone & landscaping are indicative only.

**APLACE**

QUEENSLAND  
2/3912 PACIFIC HWY,  
LOGANHOLME QLD 4129  
P (07) 2802 1650

**CONTACT**  
SALES@APLACE.COM.AU  
**APLACEBYGLENVILL.COM.AU**

NOTE: Minimum lot size may vary depending on the estate design guidelines and building envelopes. Floorplan areas may vary slightly in size depending on facade selection. Floorplans shown are not to scale. Floorplan may be mirrored to suit garage crossover location.  
Fixed price GST inclusive. Pricing subject to change without notice